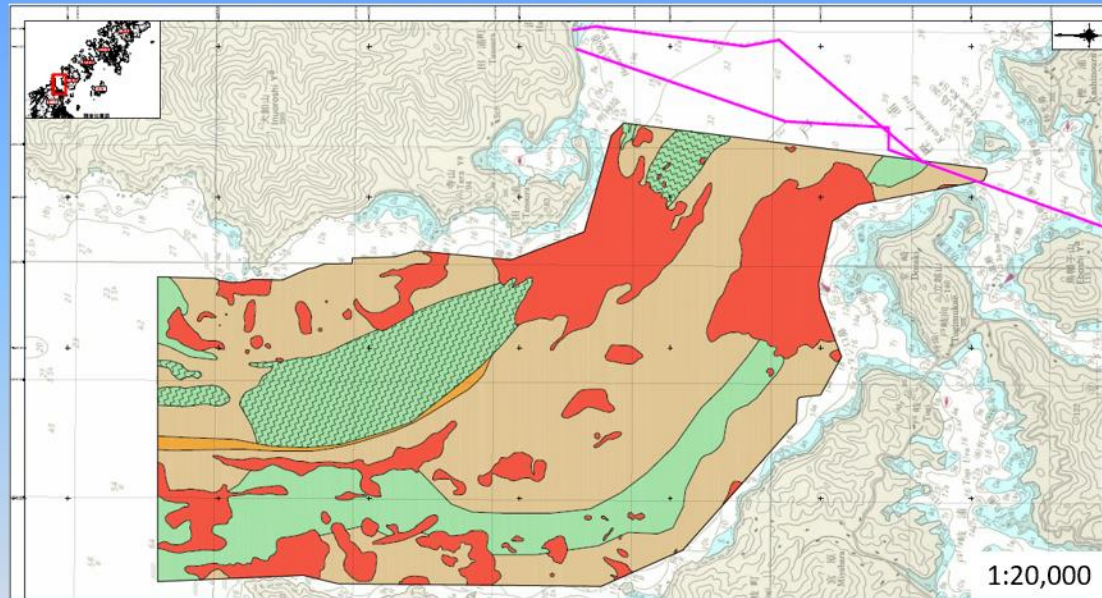



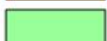





## Distribution of Rocy, Sandy & Gravel areas (Tanoura strait)



Source: MOE

### Explanatory note

-  Area made of naked rocks
-  Area covered by gravels
-  Area covered by fractured shells or coarse sand whose diameters are 2 mm or more
-  Area covered by sand whose diameters are between 0.85 mm and 0.075 mm
-  Megaripple
-  Boundary line showing the distribution of seabed components
-  Route of existing undersea cable