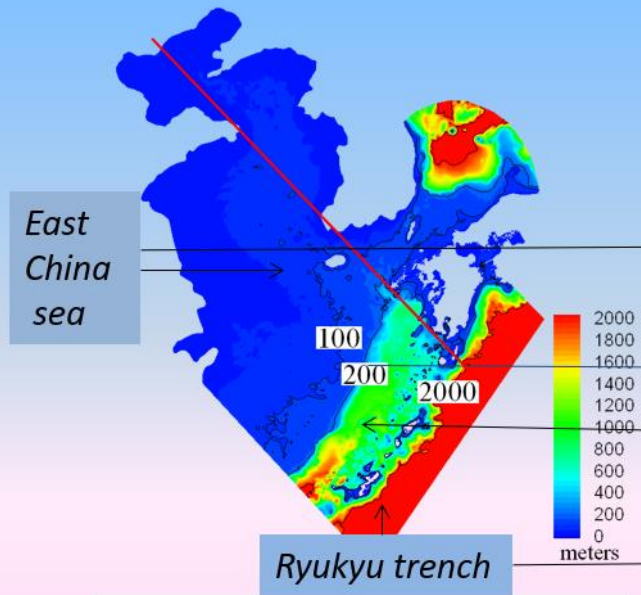


# Celerity East China Sea

## Bathymetric chart of East China Sea

*Celerity (meters/sec)*  
**C** (m/s)

Bottom Topography of East China Sea



$$C = \sqrt{G \times D}$$

(C) (G) (D)

Depth 100m : **31 m/s**

Depth 200m : **45 m/s**

200-1,000 m  
<200 m

Depth 2,000m : **141 m/s**

1,000-2,000 m

>2,000 m  
7,460 m (max)

Depth 6,000m : **245 m/s**

Kyushu Univ. S. Yamaguchi, J-BIRD, Japan  
Coast Guard ,ETOPO 1 database of  
NOAA ,JODC