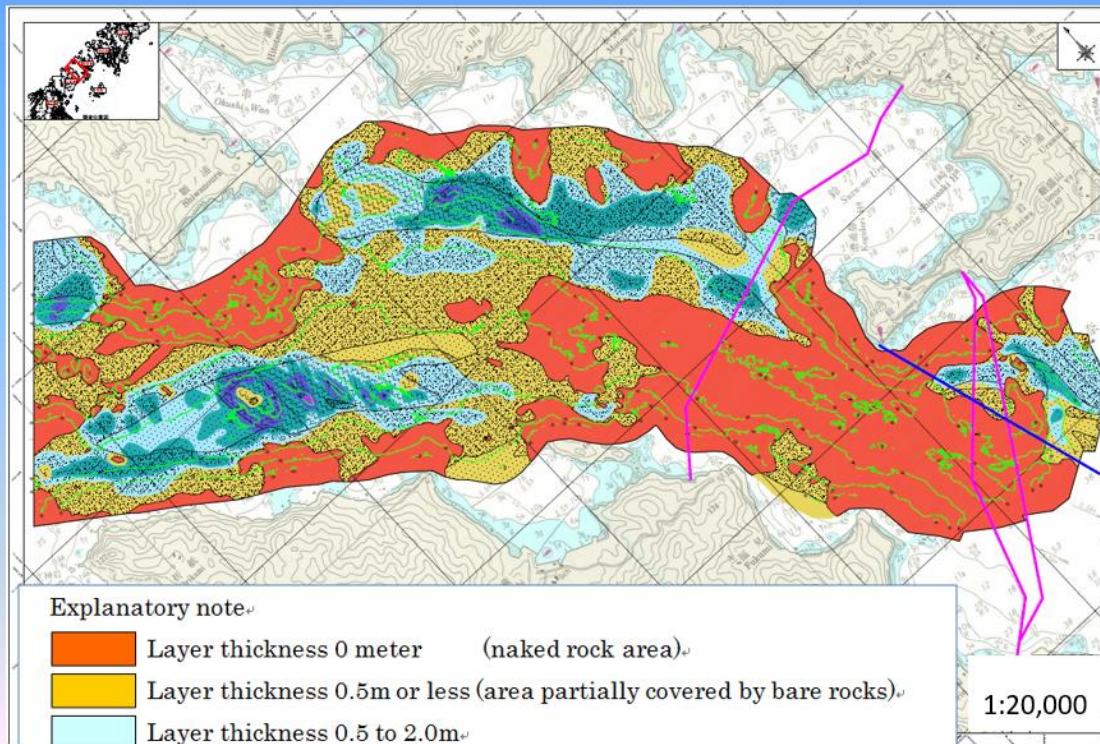











Geological Features (Naru Strait)



Explanatory note

-  Layer thickness 0 meter (naked rock area)
-  Layer thickness 0.5m or less (area partially covered by bare rocks)
-  Layer thickness 0.5 to 2.0m
-  Layer thickness 2.0 to 4.0m
-  Layer thickness 4.0 to 6.0m
-  Layer thickness 6.0 to 8.0m
-  Layer thickness 8.0 to 10.0m
-  Route of existing undersea cable
-  Boundary with port

Source: MOE

1:20,000